



Present and Future Trends in Expert Finder Systems

Robert H. McDonald
Dean of University Libraries
University of Colorado Boulder

February 28, 2019 | EFS National Forum 2019 | Orlando, FL



University of Colorado **Boulder**

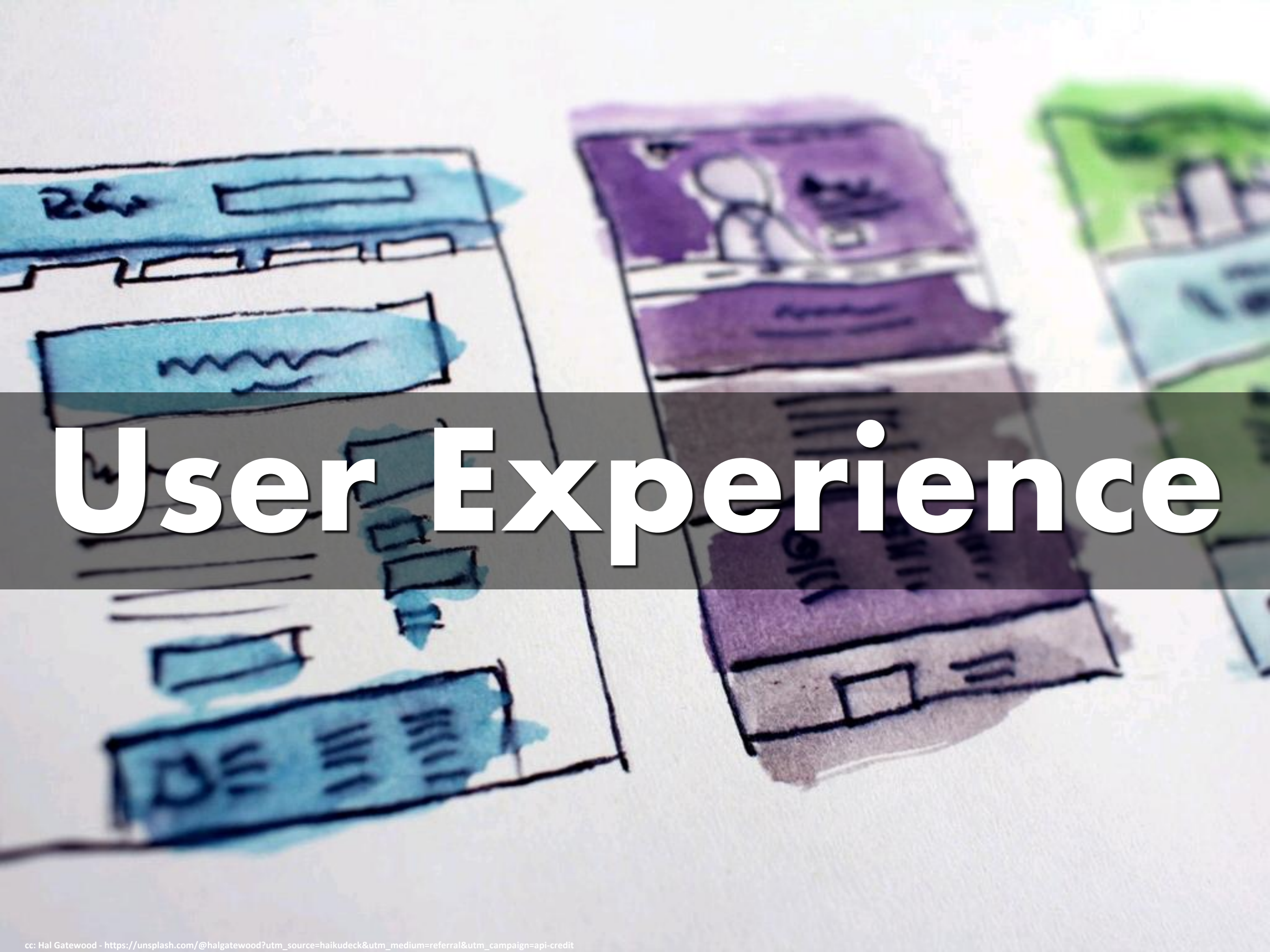
#expertfindersystems | @mcdonald



Be Boulder.

Expert Finder Systems





User Experience

Google Scholar



Jennifer Balch

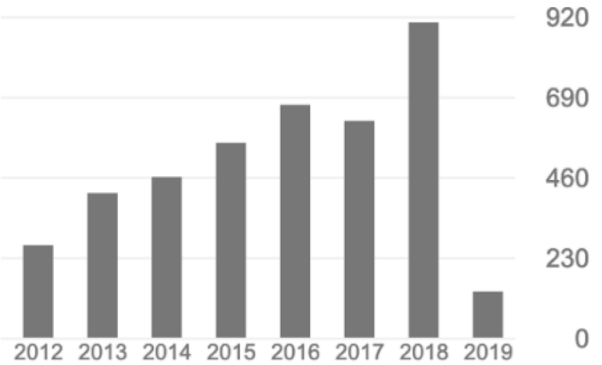
Director of Earth Lab & Assistant Professor, Department of Geography, [University of Colorado-Boulder](#)
Verified email at colorado.edu - [Homepage](#)

[FOLLOW](#)

TITLE	CITED BY	YEAR
Fire in the Earth system DMJS Bowman, JK Balch, P Artaxo, WJ Bond, JM Carlson, MA Cochrane, ... science 324 (5926), 481-484	1629	2009
The Amazon basin in transition EA Davidson, AC de Araújo, P Artaxo, JK Balch, IF Brown, ... Nature 481 (7381), 321	689	2012
The human dimension of fire regimes on Earth DMJS Bowman, J Balch, P Artaxo, WJ Bond, MA Cochrane, CM D'antonio, ... Journal of biogeography 38 (12), 2223-2236	466	2011
Introduced annual grass increases regional fire activity across the arid western USA (1980–2009) JK Balch, BA Bradley, CM D'antonio, J Gómez-Dans Global Change Biology 19 (1), 173-183	302	2013

Cited by [VIEW ALL](#)

	All	Since 2014
Citations	4478	3370
h-index	19	17
i10-index	26	24



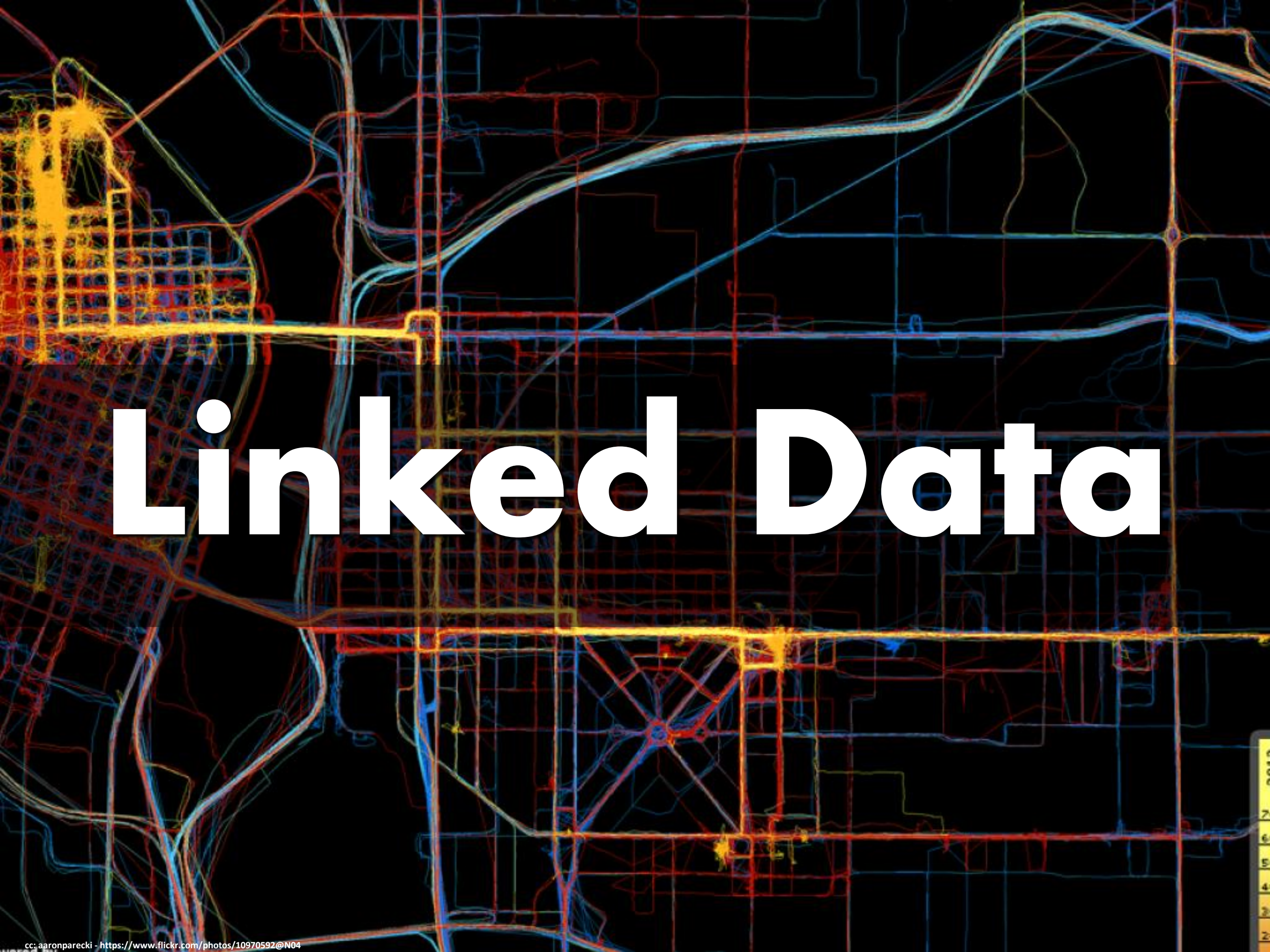


Connectedness

EFS Drivers

Focus	Description
Usefulness (UX)	<ul style="list-style-type: none">Research information management practices are complex, and institutions frequently use several systems to support research information workflows that increasingly demand greater interoperability—with both internal and external systems.
Researcher	<ul style="list-style-type: none">The researcher must be supported in ways to utilize the expert finder system that take into account their workflows and incentives for use. It has to be easy to use and useful to the researcher.
Institution	<ul style="list-style-type: none">May institutions use these systems to assess their output and to review areas for potential growth. Use of the systems in this way do not always take advantage of best practices in data governance and management. Using tools simply for compliance won't ensure long-term best practices for university data.
Funding Agency	<ul style="list-style-type: none">Lack of coordination across the many federal agencies in the U.S. has fragmented the use of expert finder systems. Models like EuroCRIS could help but would require lots of cooperation at many different levels of the research eco-system.
Discipline	<ul style="list-style-type: none">Disciplines and societies are starting to understand the value in expert finder systems as they extend into the publication sphere and are linked to research outputs, ex. journals, data, instruments, research resources, but mostly these have been too late when coming out of the commercial publishing sector.





Linked Data

Impact



<http://bit.ly/2TgQX1b>

euroCRIS
Current Research Information Systems

The International Organisation for Research Information



News

[CRIS2018 proceedings published](#)

08-02-2019

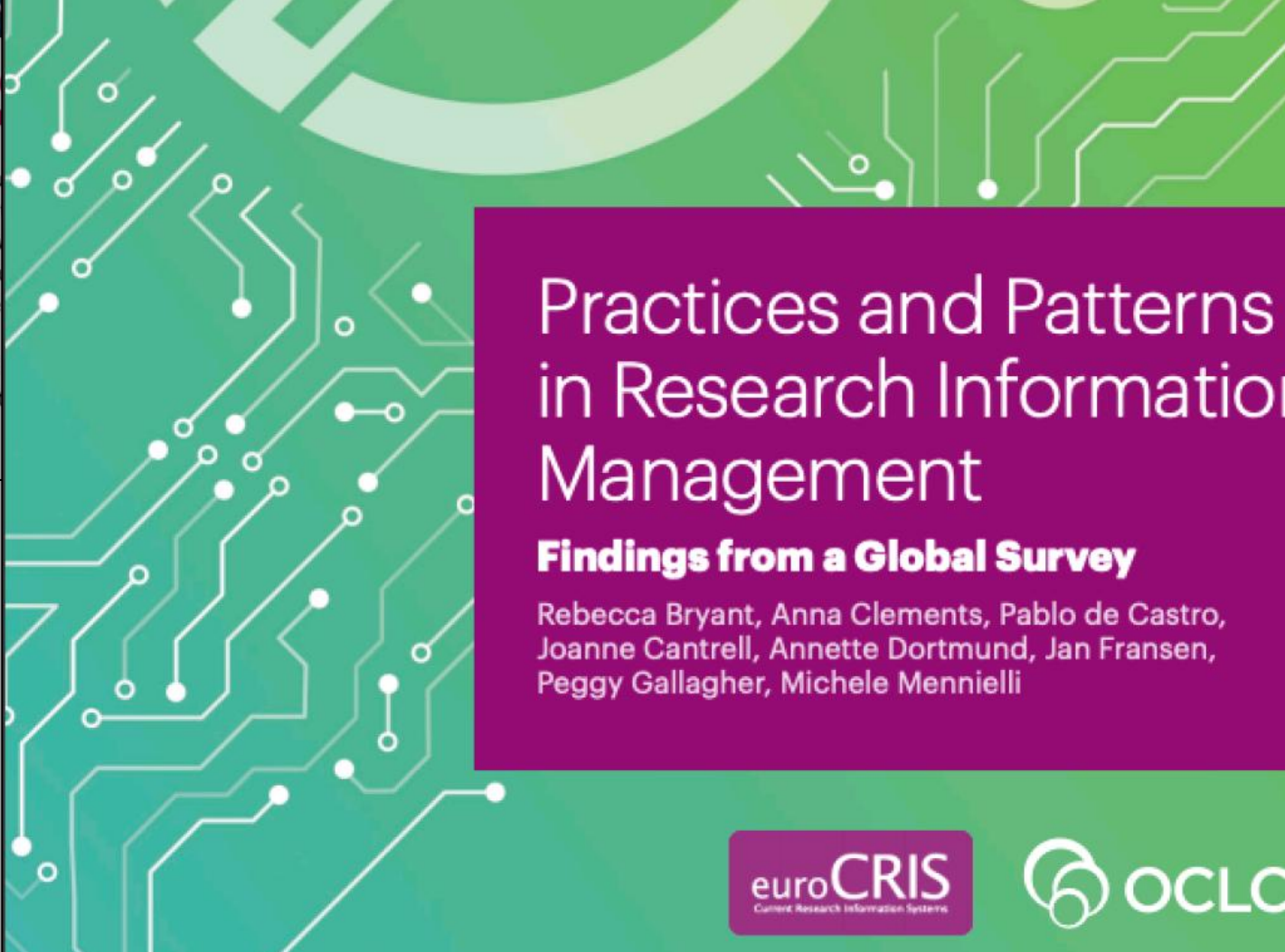
The special issue of Procedia Computer Science where the selected proceedings for the CRIS2018 conference in Umeå have been published is [already available online](#).

[OCLC webinar on the joint euroCRIS/OCLC RIM survey](#)

euroCRIS Spring 2019 membership meeting at "Taking steps towards international CRIS systems"

The venue for the Spring 2019 membership meeting was announced at the SMM Warsaw: [CSC in Espoo/Helsinki, Finland](#). The event dates are **2019**. The event website will soon become available, together with the call for proposals. In the meantime, please check the call for proposals below for contributions. The call was sent out on Jan 23rd with a deadline for submissions until the end of February.

While euroCRIS members will enjoy free registration, the event has a €60 registration fee. Attending non-members will be entitled to a discount upon registration.




Practices and Patterns in Research Information Management

Findings from a Global Survey

Rebecca Bryant, Anna Clements, Pablo de Castro, Joanne Cantrell, Annette Dortmund, Jan Fransen, Peggy Gallagher, Michele Mennielli

euroCRIS
Current Research Information Systems

 OCLC



Universities

CU EXPERTS - <https://experts.colorado.edu>

CU Experts Research & Expertise Across CU Boulder
UNIVERSITY OF COLORADO BOULDER

Search CU Experts

CU Home · A to Z · Campus Map

HomePeopleOrganizationsPublicationsHonorsResearchInternationalIndustryAbout

Welcome to CU Experts

CU Experts is a research and expertise discovery tool that enables collaboration among researchers across all disciplines.

Browse or search information on CU Boulder people and research.

Search...

Search

LEARN MORE ABOUT
FACULTY PROFILES, INDUSTRY COLLABORATION, INTERVIEWING EXPERTS,
AND FACULTY ACHIEVEMENTS

CU Experts is...

For Faculty

Need to update your faculty profile? Click [here](#) to find out how.

For Industry Collaboration

The Office of Industry Collaboration promotes and supports synergistic opportunities for engagement between CU Boulder and industry and business. Strengthening these connections provides benefits to partners, students, and local, state, and national economies.

For Journalists

The University of Colorado Boulder provides faculty expertise to local, national and international media on a variety of topics. Find information about covering stories on campus and get help arranging interviews with faculty experts on the [For Journalists](#) page of CU Boulder Today.

A Celebration of Faculty Achievement

Faculty Affairs is pleased to recognize CU-Boulder's faculty for their important work. This annual publication features awards at the campus level and beyond.



2018 Prior Years

Statistics

2.7_k
People

3.9_k
Events

1.2_k
Organizations

99_k
Research

586
Honors


©2019 Regents of the University of Colorado | Terms of Use | Powered by VIVO

Data updated last Wed Feb 20 00:12 MST 2019

University of Colorado Boulder / CU Boulder

Fundamental data on national and international awards provided by Academic Analytics.

About

CU Experts Research & Expertise Across CU Boulder
UNIVERSITY OF COLORADO BOULDER

Search CU Experts

CU Home · A to Z · Campus Map

HomePeopleOrganizationsPublicationsHonorsResearchInternationalIndustryAbout

PEOPLE SEARCH

Use the People Search directly below or the expandable Filters at left to explore Boulder faculty data. People Search allows for wildcard * or exact search with ~ double quotation. The research filter is only searching the Research Keywords, not the free-text keywords or research overview. To search VIVO without the filters in order to include all research fields, use the site search bar in the VIVO page header. Filters default to 'and' logic. Toggle with the 'or' button if desired.

share C x 10 order by ... it search term

back 151 - 160 of 2709 next

Organization

15 count ON

Cooperative Institute for Research in Environmental Sciences (CIRES) (292)

Leeds School of Business (130)

Physics (119)

Laboratory for Atmospheric and Space Physics (LASP) (85)

College of Engineering and Applied Science (83)

Electrical, Computer and Energy Engineering (ECEEE) (88)

Computer Science (84)

College of Music (80)

Mechanical Engineering (76)

Molecular, Cellular & Developmental Biology (MCDDB) (74)

Psychology and Neuroscience (71)

Institute of Arctic & Alpine Research (INSTAAR) (69)

Civil, Environmental and Architectural Engineering (66)

Aerospace Engineering Sciences (67)

School of Education (59)

Library Commons (56)

Arts/Humanities/Cultural Activities (56)

Culture (57)

Atmospheric Sciences (54)

Cultural History (53)

Data Analysis (50)

Computer Simulation/Modeling (50)

Cinema/Video (56)

Science Education (55)

Performing Arts (53)

Climate Change (53)

Physics (51)

Media Arts (51)

Computer Science (51)

Music (50)

Research Area

15 count ON

United Kingdom (508)

Germany (492)

Canada (283)

Europe (287)

France (261)

China (267)

Italy (242)

Australia (208)

Japan (206)

Netherlands (182)

Spain (180)

Switzerland (172)

Austria (156)

Sweden (156)

Austria (138)

International Activities

15 count ON

United Kingdom (508)

Germany (492)

Canada (283)

Europe (287)

France (261)

China (267)

Italy (242)

Australia (208)

Japan (206)

Netherlands (182)

Spain (180)

Switzerland (172)

Austria (156)

Sweden (156)

Austria (138)

Faculty Member

Email: Bernard.Amadei@colorado.edu

ORCID ID: 0000-0002-4475-5800

Organizations: Women and Gender Studies; Women and Gender Studies; Political Science; WISS Grand Challenge

Affiliations:

- Faculty Director - Women and Gender Studies
- Associate Professor - Women and Gender Studies
- Associate Professor - Political Science
- Assoc. Faculty Director - WISS Grand Challenge

Research Areas: Women's Studies; Conflict/Dispute Resolution; Comparative Government; Systemic Collective Behavior; Cuba; Social Change; Rape/Sexual Abuse; Social Movements; Sexual Harassment; International Security

International Activities: Spain; United Kingdom; Mexico; Nicaragua; Germany; Cuba

Faculty Member

Email: Paul.Beek@colorado.edu

ORCID ID: 0000-0001-8452-6891

Organizations: College of Arts and Sciences; Physics

Affiliations:

- Faculty Director - College of Arts and Sciences
- Professor - Physics

Research Areas: Solid State Physics; Condensed Matter Physics; Theoretical Physics

International Activities: eastern Europe; western Europe

Faculty Member

Email: David.Beauregard@colorado.edu

ORCID ID: 0000-0001-8239-4096

Organizations: International Affairs Program; Political Science

Affiliations:

- Professor - International Affairs Program
- Professor - Political Science

Research Areas: Democracy; International Relations/Diplomacy; Intergovernmental Relations

Faculty Member

Email: Matthew.C.Beard@colorado.edu

ORCID ID: 0000-0002-9711-1855

Organizations: Renewable & Sustainable Energy Institute (RASEI)

Affiliations:

- Research Associate - Renewable & Sustainable Energy Institute (RASEI)
- Research Associate - Renewable & Sustainable Energy Institute (RASEI)

Faculty Member

Email: Agnes.Becher@colorado.edu

ORCID ID: 0000-0003-0715-9109

Organizations: Mathematics

Affiliations:

- Assistant Professor - Mathematics

Research Areas: Mathematics; Topology

International Activities: China; France; United Kingdom; Switzerland; Germany; Canada; Sweden; Denmark

Faculty Member

Email: Anna.Becher@colorado.edu

ORCID ID: 0000-0003-0715-9109

Organizations: Spanish and Portuguese

Affiliations:

- Senior Instructor - Spanish and Portuguese

Research Areas: Spanish Language/Literature; Foreign Languages Education

International Activities: Spain; North America; Mexico

Faculty Member

Email: annika.becher@colorado.edu

ORCID ID: 0000-0003-0715-9109

Organizations: Physics

Affiliations:

- Professor - Physics

Research Areas: Ultrafast Chemistry; Nonlinear Dynamics; Optics; Atomic Physics; Theoretical Physics; Quantum Mechanics; Lasers and Masses; Quantum Physics

International Activities: Spain; Sweden; Germany; China

Faculty Member

Email: Stephan.Becker@colorado.edu

ORCID ID: 0000-0002-1932-8159

Organizations: Electrical, Computer and Energy Engineering (ECEEE); Applied Mathematics

Affiliations:

- Assistant Professor - Electrical, Computer and Energy Engineering (ECEEE)
- Assistant Professor - Applied Mathematics

Research Areas: Signal Processing; Data Analysis; Linear Programming; Quantum Computing; Imaging Sciences; Optimization; Applied Mathematics

International Activities: Switzerland; France; Cameroon; United Kingdom; Europe; Canada

Faculty Member

Email: ahmed.bekdash@colorado.edu

ORCID ID: 0000-0003-0663-257X

Organizations: Cooperative Institute for Research in Environmental Sciences (CIRES)

Affiliations:

- Research Associate - Cooperative Institute for Research in Environmental Sciences (CIRES)

Research Areas: Wind Turbines; Aeronautical/Astronautical Engineering; Fluid Mechanics; Aerodynamics

Faculty Member

Email: ahmed.bekdash@colorado.edu

ORCID ID: 0000-0003-0663-257X

Organizations: English

Affiliations:

- Associate Professor - English

Research Areas: Language and/or Literature; Medieval Manuscripts/Books/Mss; Books; English Language/Literature; Languages; Literature—Design/Production; Oral Literature; Translation; Literary History; Icelandic Language/Literature; British History; Medieval Studies; Literary Criticism; Medieval History; Medieval Language and/or Literature; Poetry; Humanities; General/Other; Poetry; European Language/Literature; Language and/or Literature; Creative Writing; Philosophy of Language

Faculty Member

Email: Timothy.Beech@colorado.edu

ORCID ID: 0000-0001-8239-4096

Organizations: English

Affiliations:

- Associate Professor - English

Research Areas: Language and/or Literature; Medieval Manuscripts/Books/Mss; Books; English Language/Literature; Languages; Literature—Design/Production; Oral Literature; Translation; Literary History; Icelandic Language/Literature; British History; Medieval Studies; Literary Criticism; Medieval History; Medieval Language and/or Literature; Poetry; Humanities; General/Other; Poetry; European Language/Literature; Language and/or Literature; Creative Writing; Philosophy of Language

back 151 - 160 of 2709 next


©2019 Regents of the University of Colorado | Terms of Use | Powered by VIVO

Data updated last Wed Feb 20 00:12 MST 2019

University of Colorado Boulder / CU Boulder

Fundamental data on national and international awards provided by Academic Analytics.


About

CU Experts Research & Expertise Across CU Boulder
UNIVERSITY OF COLORADO BOULDER

Search CU Experts

CU Home · A to Z · Campus Map

HomePeopleOrganizationsPublicationsHonorsResearchInternationalIndustryAbout



Amadei, Bernard

Distinguished Professor

Co-author Network

Positions

Distinguished Professor, Civil, Environmental and Architectural Engineering

Research Areas

Appropriate Technology | Civil Engineering | Community Development/Revitalization | Engineering Education | Engineering Geology | Geotechnical Engineering | International Education/Training | Poverty and the Poor | Science/Engineering Studies—Developing Countries | Social Entrepreneurship | Systems Theory

Contact Info

Email

Curriculum Vitae

Website

Twitter

LinkedIn

Research

Publications

Teaching

Background

International Activities

Other Profiles

research overview

Prof. Amadei's current interests reside in the application of systems science and complexity science in small-scale community development projects and geological engineering projects. More specifically, he is interested in how to use system dynamics tools combined with other decision tools to (i) model the complex interactions taking place across social, natural, economic, and infrastructure systems; and (ii) understand how such interactions my contribute to development. Dr. Amadei is also interested in the new field of Peace Engineering (developed at Drexel University). It introduces engineers to the issues and mechan analysis and peacebuilding and invites engineers to develop systemic methods and support peacebuilding efforts in conflict avoidance, reduction, and/or recovery.

keywords

Engineering for Developing Communities and International Development; Sustainable Development; Geotechnical and Geological Engineering; Complexity and Dynamics; Peace Engineering

Publications

selected publications

book

- A Systems Approach to Modeling Community Development Projects 2018
- Engineering for Sustainable Human Development A Guide to Successful Small-Scale Community Projects 2014
- Rock Anisotropy and the Theory of Stress Measurements 2012
- Rock Stress and Its Measurement 2012
- Rock Mechanics for Industry Proceedings of the 37th U.S. Rock Mechanics Symposium 2011

chapter

- Effect of Joints on Rock Mass Strength and Deformability 1993

conference proceeding

- Engineering for Peace: Challenges and Opportunities 2018
- Global Engineering for a Small Planet 2018
- A new insecure-secure diffusion archetype to model complex anthropocentric systems and technical sciences 2018
- Analyzing sustainable development: systems-based methods and modeling tools for Sustainable Development Goals 2018

journal article

- Fostering Systems Thinking Within Engineers Without Borders Student Teams Using Model Building. International Journal of Engineering Education. 247-260. 2017
- Post-disaster reconstruction: lessons from Nagapattinam district, India. Develop Practice 518-534. 2015
- Integrating Sustainable Development into a Service-Learning Engineering Course Professional Issues in Engineering Education and Practice. 2014
- Disaster Resilience: A National Imperative. Environment: Science and Policy for Sustainable Development 25-29. 2013

Teaching

courses taught

AREN 4849 Independent Study

CVEN 3698 Engineering Geology

CVEN 4837 Special Topics (Spring 2019)

CVEN 4849 Independent Study (Spring 2019)

CVEN 5768 Introduction to Rock Mechanics (Spring 2019)

Background

education and training

Ph.D., University of California-Berkeley 1982

M.S., Univ. of Toronto (Canada) 1979

B.S., National Polytechnic Instit. of Lorraine (France) 1977

M.S., School of Appl. Geology & Mine Prospecting (France) 1977

awards and honors

Distinguished Professorship (University of Colorado President), conferred by University of Colorado President. 2016

Robert L. Stearns Award (Alumni Association), conferred by Alumni Association. 2011

Distinguished Members (American Society of Civil Engineers), conferred by American Society of Civil Engineers. 2009

Membership (National Academy of Engineering), conferred by National Academy of Engineering. 2008

Distinguished Achievement Award (Civil, Environmental and Architectural Engineering), conferred by Civil, Environmental and Architectural Engineering. 2007

International Activities

global connections related to teaching and scholarly work (in recent years)

Brazil Country

Costa Rica Country

Ecuador Country

Israel Country

Lebanon Country

Other Profiles

ORCID ID

<https://orcid.org/0000-0001-8239-4096>


©2019 Regents of the University of Colorado | Terms of Use | Powered by VIVO

Data updated last Wed Feb 20 00:12 MST 2019

University of Colorado Boulder / CU Boulder

Fundamental data on national and international awards provided by Academic Analytics.

About

CU Experts Research & Expertise Across CU Boulder
UNIVERSITY OF COLORADO BOULDER

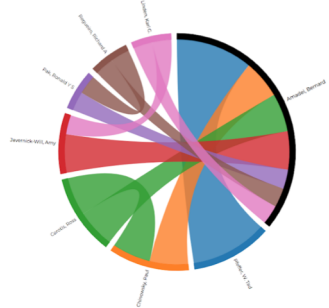
Search CU Experts

CU Home · A to Z · Campus Map

HomePeopleOrganizationsPublicationsHonorsResearchInternationalIndustryAbout

Amadei, Bernard

Co-author Network



Research Areas

Appropriate Technology | Civil Engineering | Community Development/Revitalization | Engineering Education | Engineering Geology | Geotechnical Engineering | International Education/Training | Poverty and the Poor | Science/Engineering Studies—Developing Countries | Social Entrepreneurship | Systems Theory

Teaching

courses taught

AREN 4849 Independent Study

CVEN 3698 Engineering Geology

CVEN 4837 Special Topics (Spring 2019)

CVEN 4849 Independent Study (Spring 2019)

CVEN 5768 Introduction to Rock Mechanics (Spring 2019)

Background

education and training

Ph.D., University of California-Berkeley 1982

M.S., Univ. of Toronto (Canada) 1979

B.S., National Polytechnic Instit. of Lorraine (France) 1977

M.S., School of Appl. Geology & Mine Prospecting (France) 1977

awards and honors

Distinguished Professorship (University of Colorado President), conferred by University of Colorado President. 2016

Robert L. Stearns Award (Alumni Association), conferred by Alumni Association. 2011

Distinguished Members (American Society of Civil Engineers), conferred by American Society of Civil Engineers. 2009

Membership (National Academy of Engineering), conferred by National Academy of Engineering. 2008

Distinguished Achievement Award (Civil, Environmental and Architectural Engineering), conferred by Civil, Environmental and Architectural Engineering. 2007

International Activities

global connections related to teaching and scholarly work (in recent years)

Brazil Country

Costa Rica Country

Ecuador Country

Israel Country

Lebanon Country

Other Profiles

ORCID ID

<https://orcid.org/0000-0001-8239-4096>

©2019 Regents of the University of Colorado | Terms of Use | Powered by VIVO

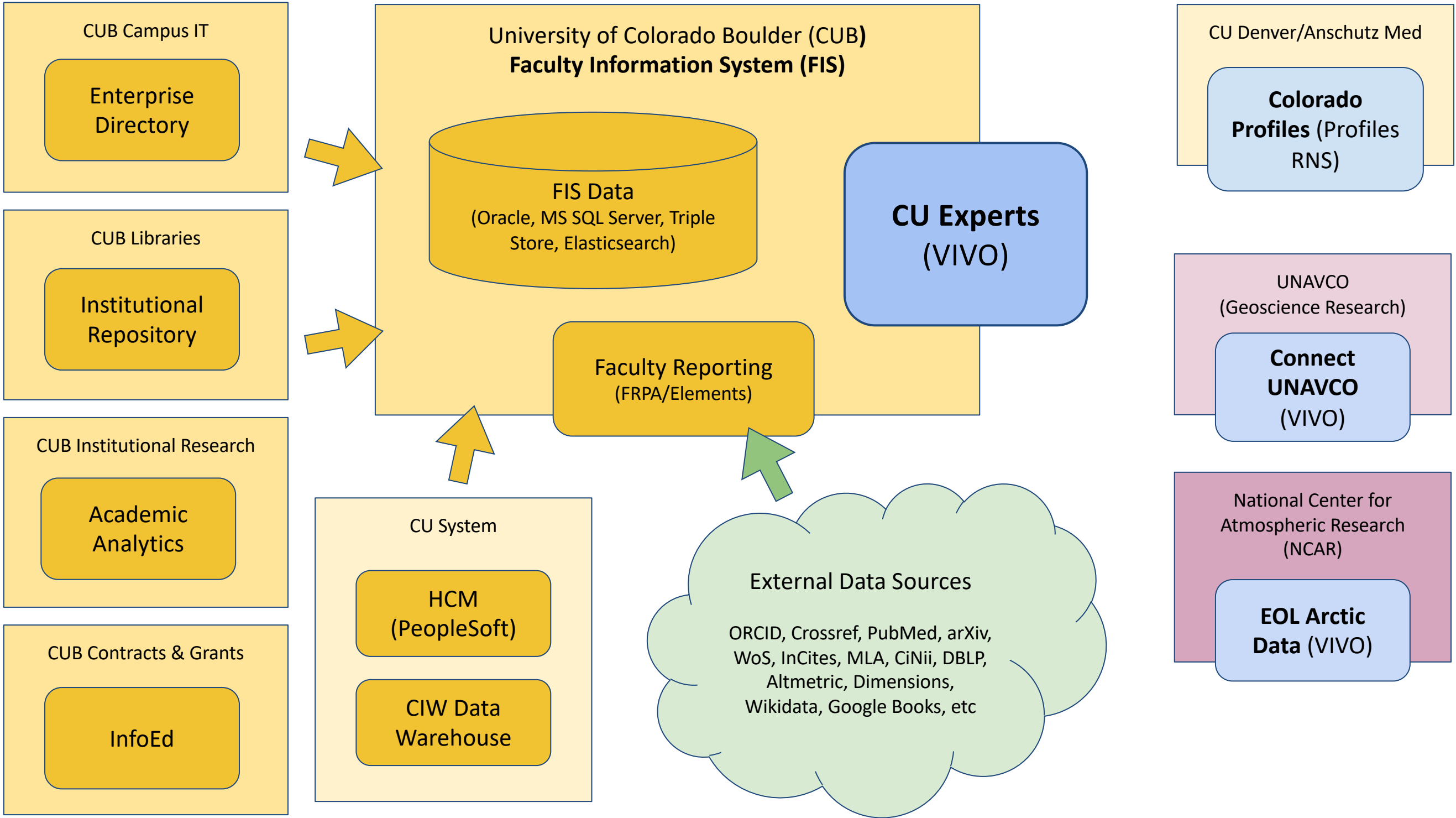
Data updated last Wed Feb 20 00:12 MST 2019

University of Colorado Boulder / CU Boulder

Fundamental data on national and international awards provided by Academic Analytics.

About

CU EXPERTS ARCHITECTURE



Information
Management

Real-Time Analytics

Intelligent

Data Acquisition

Structured Data
Integration & Discovery

Data Processing
Version of the Truth

Speed of Thought Analysis

Interactive Dashboards

Event Processing
Advanced Analytics

Application-Em

Optimize
Recomm

Guided Use
Policy and
Manag

Data Governance

Content

External
Data

Authoritative
Data

COTS Data

System-
Generated Data

Historical
Data

Cloud

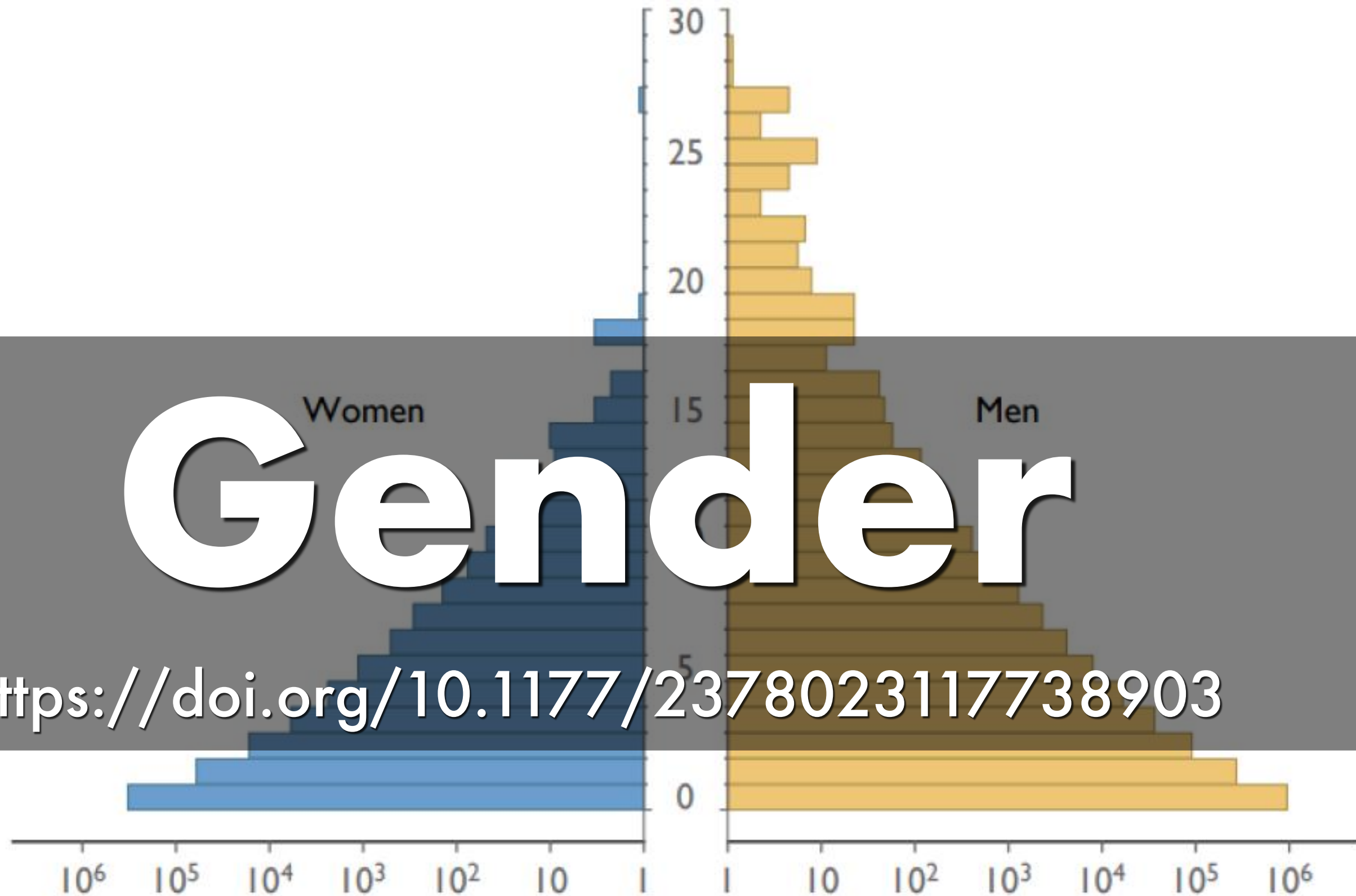
Managed Services

Private Cloud

Trac



Number of authorships with n self-citations



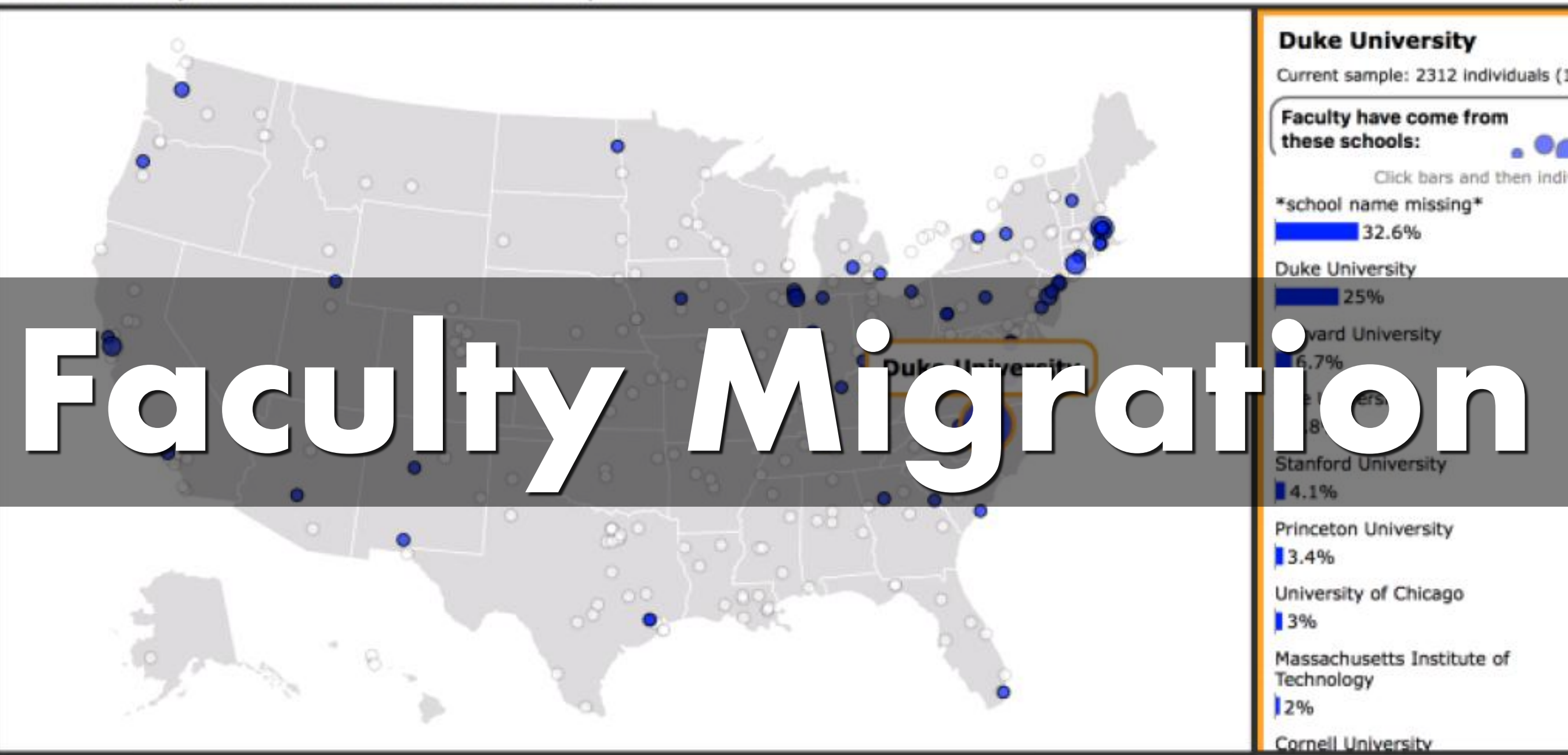
<https://doi.org/10.1177/2378023117738903>

g, M et al. (2016) Men set their own cites high: Gender and self-citation across fields and over t

Courtesy Jevin West Lab - <https://www.jevinwest.org/>

U.S. ACADEMIC MIGRATION MAP

Where do people who pursue academic careers in the U.S. go on to land faculty positions after earning their advanced degrees?
Where do faculty come from? Click on a school to explore.



Faculty Migration

[Eigenfactor.org/projects/migration/](https://eigenfactor.org/projects/migration/) Data source.



WHO KNOWS ONLY HIS OWN GENERATION REMAINS ALWAYS A CHILD

Libraries

OCLC/EuroCRIS Survey 2018

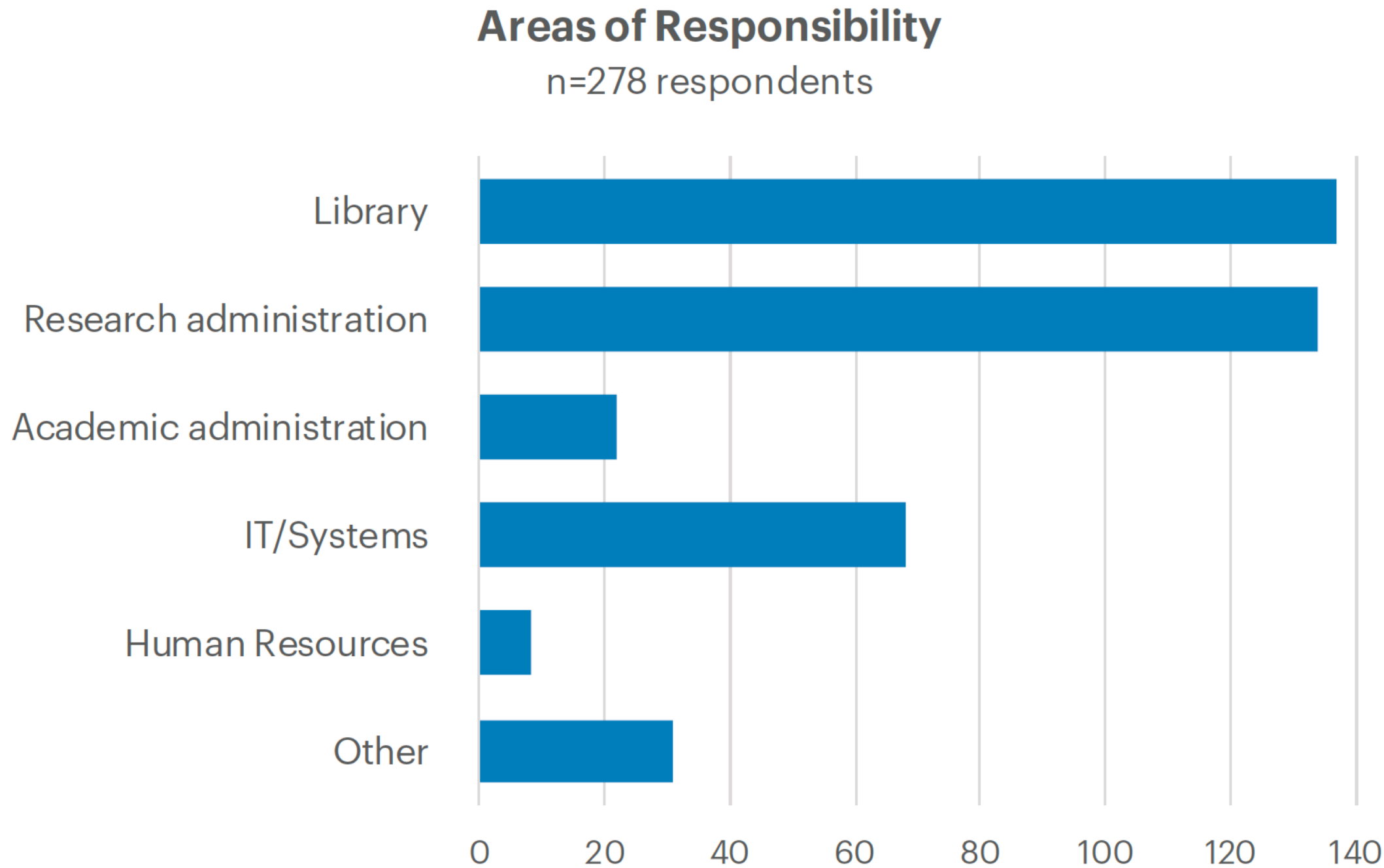
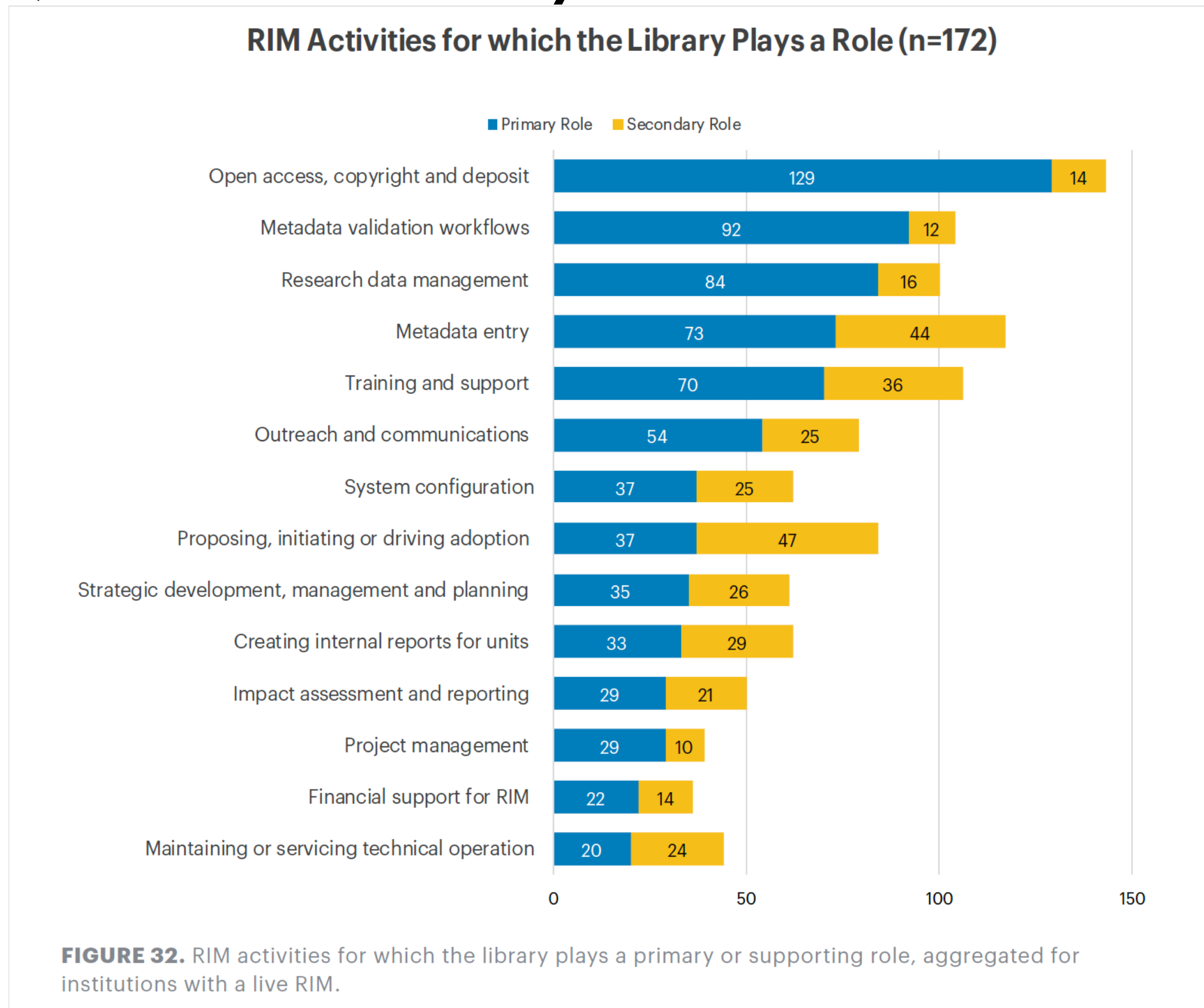


FIGURE 2. Areas of responsibility of survey respondents, where respondents could select more than one option.

Context

OCLC/EuroCRIS Survey 2018

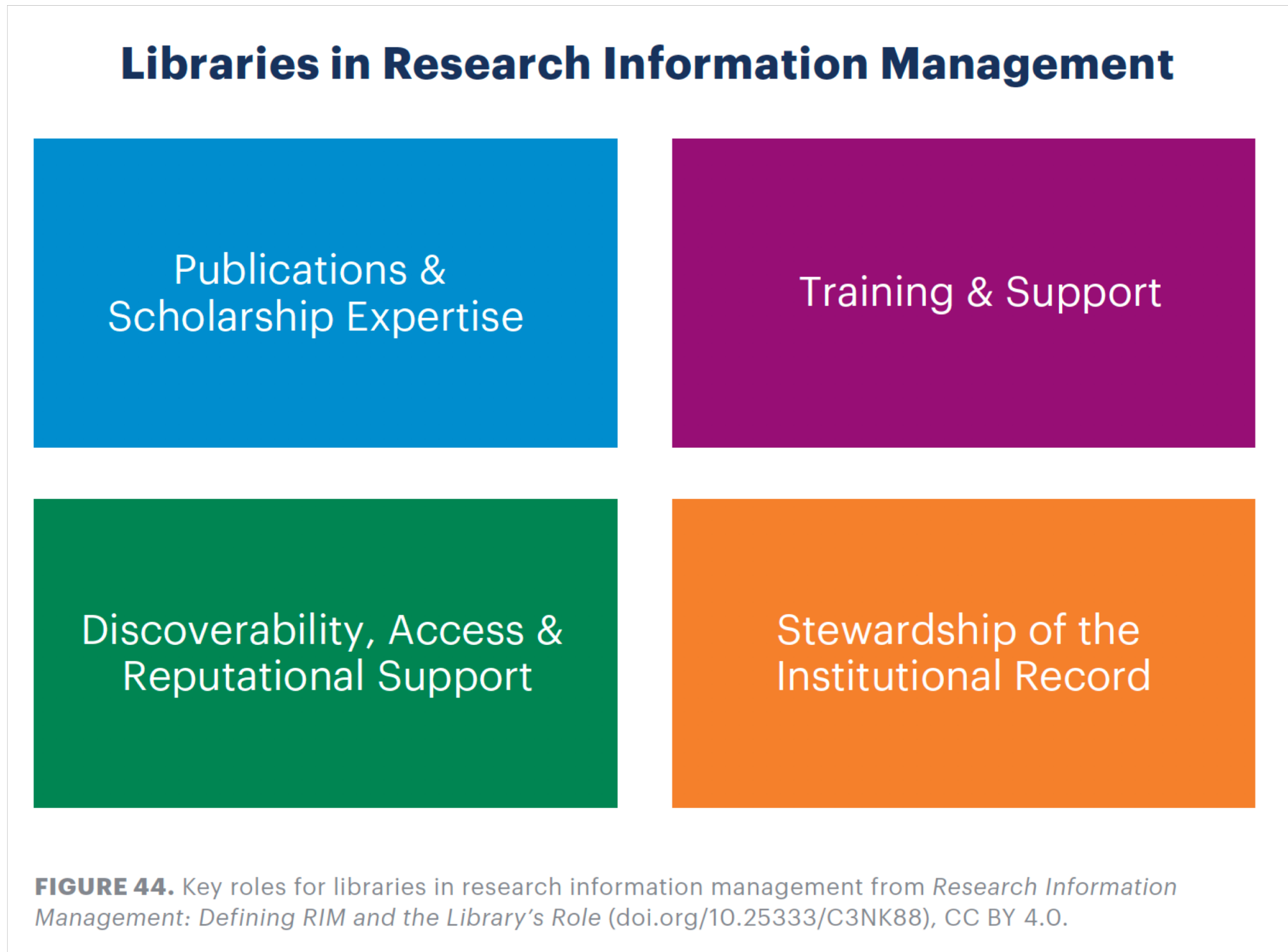


Citation

The image features a white background filled with numerous hand-drawn arrows in various colors including red, blue, green, orange, purple, brown, and grey. The arrows are drawn in a simple, sketchy style and point in many different directions, creating a sense of movement and complexity. A horizontal, semi-transparent grey bar runs across the middle of the image, and the word "APIs" is written in a large, white, bold, sans-serif font across this bar.

APIs

OCLC/EuroCRIS Survey 2018





Dashboarding



Re-Use

DATA



Platforms



Thank You!

CU Experts is part of the Faculty Information System (FIS) at CU Boulder. Developed and maintained by the FIS Development Team, a group within the Office of Faculty Affairs with full support of the Vice Provost of Faculty Affairs and in strong partnership with the University Libraries and the Vice Chancellor for Research and Innovation.

Team members include:

Liz Tomich
Alex Viggio
Don Elsborg
Vance Howard
Matt Ramey
Kristina Eklund



Present and Future Trends in Expert Finder Systems

Robert H. McDonald
Dean of University Libraries
University of Colorado Boulder

February 28, 2019 | EFS National Forum 2019 | Orlando, FL



University of Colorado **Boulder**

#expertfindersystems | @mcdonald



Be Boulder.

